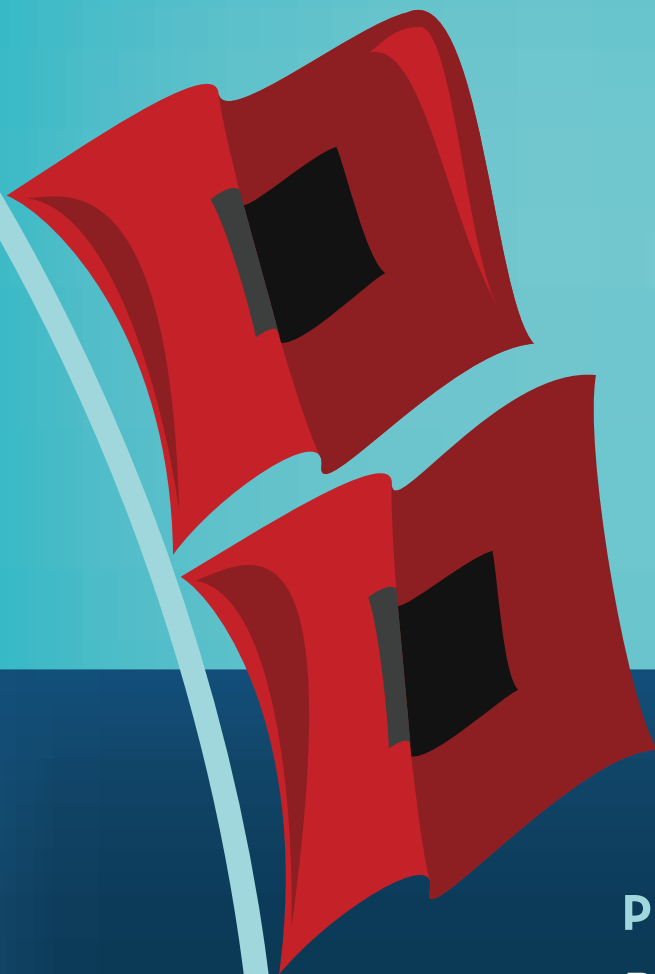


# HURRICANE PREPARATION GUIDE



PROVIDED BY:

**BRUNSWICK  
ELECTRIC**



Membership Corporation

A Touchstone Energy®  
Cooperative



Report an Outage  
BEMC 1.800.682.5309

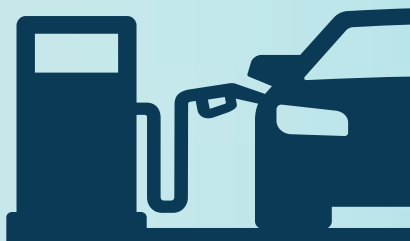
## BE PREPARED FOR A HURRICANE

Brunswick Electric Membership Corporation is providing this information so you will be prepared for storms and power outages. Even areas well away from the coastline can be threatened by dangerous flooding and destructive winds from a storm. **BEMC** puts nearly 80 years of experience to work for you, the member, **Because Every Member Counts.**

Get some cash.



Gas up your vehicles.



Charge cordless devices & cell phones.



Fill containers and bathtubs with water.



Secure loose items outside your home.

Know your closest evacuation shelters by checking with local authorities and monitoring the media.



Create a plan where you would ride out a storm if you are told to evacuate. Establish a family communication plan.

# HAVE THESE SUPPLIES ON HAND



- Water, one gallon of water per person per day for at least a week, for drinking and sanitation.



- Food, at least a one-week supply of non-perishable food.



- Battery-powered or hand crank radio and a NOAA Weather Radio with tone alert. Extra batteries.

- Flashlight and extra batteries.

- Cell phone with chargers, inverter or solar charger.

- Wrench or pliers to turn off utilities.

- First aid kit.

- Prescription medications and eyeglasses/contacts.

- Manual can opener for food.

- Cooler and ice.

- Matches in a waterproof container.

- Paper cups, plates, paper towels and plastic utensils.

- Infant formula and diapers.

- Toilet paper and feminine hygiene products.

- Moist towelettes, garbage bags and plastic ties for personal sanitation.

- Blankets or sleeping bags.

- Pet carrier, pet food and extra water for your pet.

- Paper and pencil.

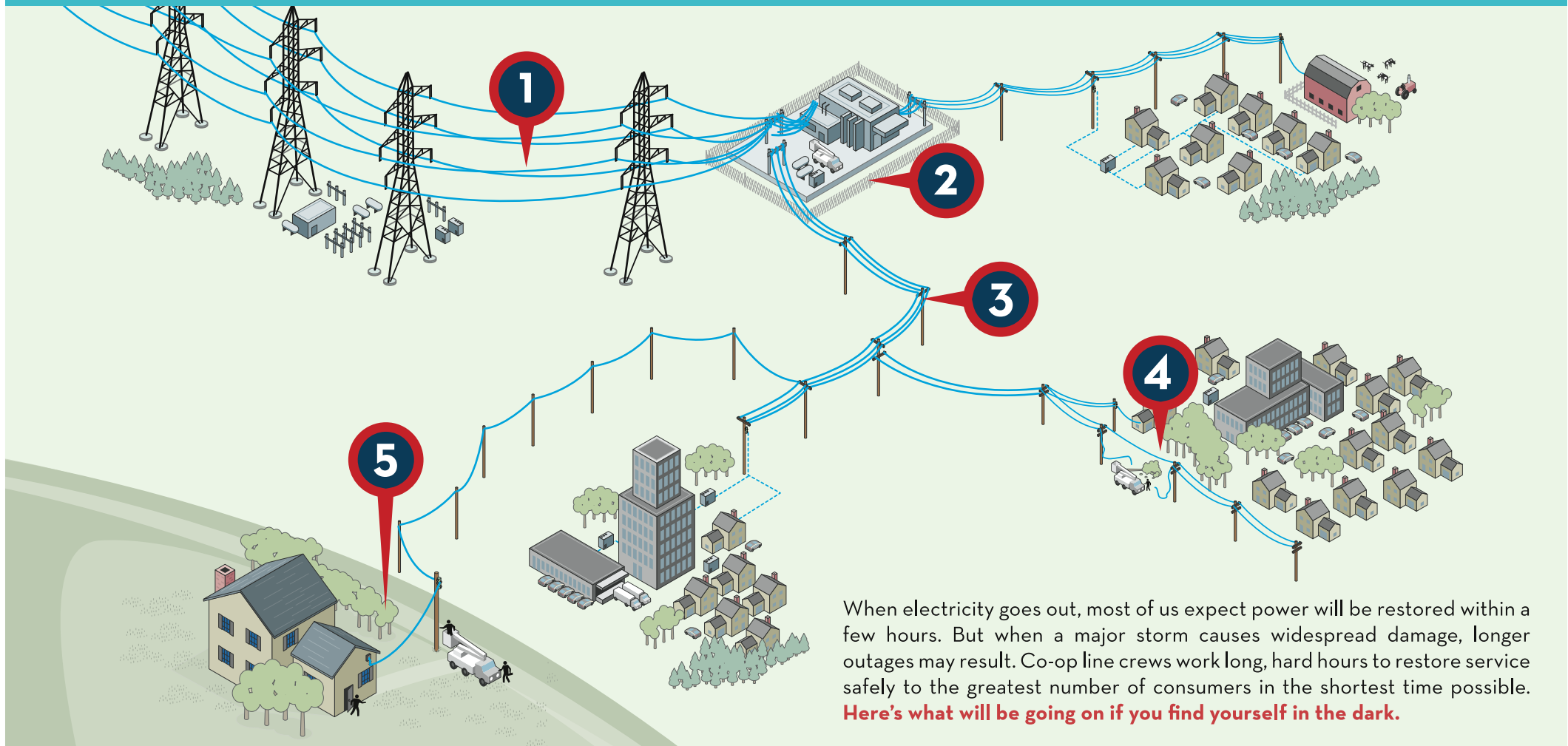
- Cash or traveler's checks and change.

- Important family documents such as copies of insurance policies, identification and bank account records in a waterproof, portable container.

- Books, games, puzzles or other activities for children.

For a complete list, visit [www.ready.gov](http://www.ready.gov)





When electricity goes out, most of us expect power will be restored within a few hours. But when a major storm causes widespread damage, longer outages may result. Co-op line crews work long, hard hours to restore service safely to the greatest number of consumers in the shortest time possible. **Here's what will be going on if you find yourself in the dark.**

## 1 High-Voltage Transmission Lines

Transmission towers and cables that supply power to transmission substations rarely fail. But when damage occurs, these facilities must be repaired before other parts of the system can operate.

## 2 Distribution Substations

Each substation serves hundreds or thousands of consumers. When a major outage occurs, line crews inspect substations to determine if problems stem from transmission lines feeding into the substation, the substation itself, or if problems exist down the line.

## 3 Main Distribution Lines

If the problem cannot be isolated at a distribution substation, distribution lines are checked. These lines carry power to groups of consumers in communities or housing developments.

## 4 Tap Lines

If local outages persist, supply lines, called tap lines, are inspected. Tap lines deliver power to transformers, either mounted on poles or placed on pads for underground service, outside businesses, schools, and homes.

## 5 Individual Homes

If your home remains without power, the service line between a transformer and your residence may need to be repaired. Always call to report an outage to help line crews isolate these local issues.

# WHEN POWER GOES OUT

- Report your outage by calling **800-682-5309**
- Visit [www.BEMC.org](http://www.BEMC.org) and click on the Outage Map to track outages and restoration in your service area.
- Limit the number of times you open your refrigerator.
- Put frequently used items into a cooler with ice.
- If the air conditioning had been on, close blinds and curtains to keep cool as possible.
- Use non-essential battery-powered items, such as phones, only when needed.
- If you are using a generator, follow the safety tips on the next page.

## EMERGENCY NUMBERS:

### BRUNSWICK COUNTY

Public Information (910) 253-2565

Emergency Management (910) 253-5383

### COLUMBUS COUNTY

Public Information (910) 640-6630

Emergency Management (910) 640-6610

**TO REPORT AN OUTAGE:** **800-682-5309 (BEMC)**  
**800-769-3766 (Duke Energy)**

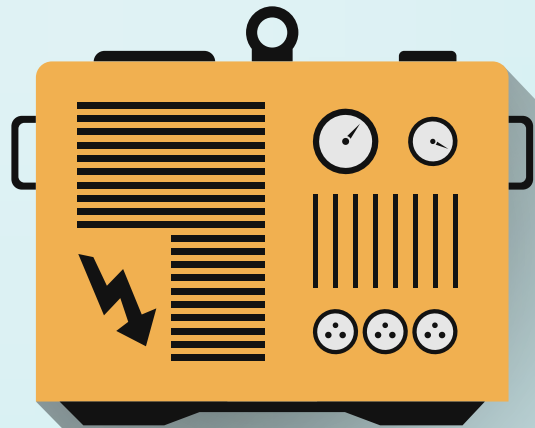
# WHEN POWER IS RESTORED

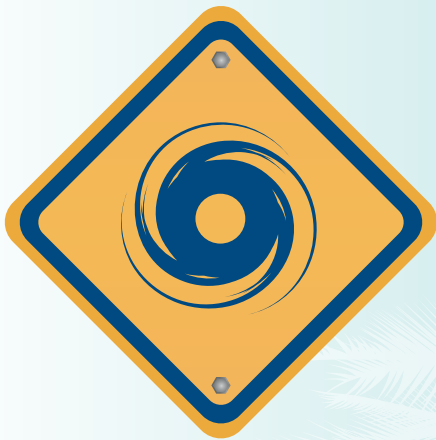
- Stay away from downed power lines.
- If you are driving and come to an intersection where the stoplight is out, always yield to the car on your right.
- Go room to room and turn off lights and appliances that may have been on when the power went out.
- Set all your clocks to the proper time.
- Discard any spoiled food.
- Take photos of damage and report it to your insurance company.
- Check on your neighbors.

# ⚠️ GENERATOR SAFETY ⚠️

**Improperly used or installed, generators can kill you and the people restoring your power.**

- Be sure to follow manufacturers' directions for installation and operation.
- To prevent electric shock, make sure generator is properly grounded.
- Never connect generators directly to your home's wiring. When power is restored, the reverse flow of electricity can electrocute an unsuspecting utility worker and destroy your appliances.
- Operate electric generators or other fuel-powered machines outside where deadly carbon monoxide fumes cannot enter the home.
- Use generator only in well-ventilated, dry areas located away from air intakes to the house. Do not use generator in an attached garage.
- Do not overload generator by operating more appliances and equipment than the generator can handle.
- Individual appliances should be plugged directly into the receptacle outlet of the generator using appropriately sized extension cords to carry the electric load.
- Make sure cords are rated for outdoor use, have a grounded, three-pronged plug, and are in good condition.
- Do not run extension cords under rugs.
- Never plug a generator into a household outlet.
- Do not refuel a generator while it is running.
- Store fuel outside of living areas and away from heat sources like water heater pilot lights.
- Turn off all equipment powered by the generator before shutting it down.
- Keep children and pets away from generators.





# KNOW YOUR TERMINOLOGY

**Hurricane Watch:** An announcement of possible hurricane conditions for a particular area within 36 hours.

**Hurricane Warning:** An advisory that a hurricane is expected to strike a specified area within 24 hours or less.

**Hurricane Season runs from June 1 to November 30.**

## SAFFIR-SIMPSON HURRICANE SCALE

### **CATEGORY 1** 74-95 mph

Very dangerous winds will produce some damage: Well-constructed frame homes could have damage to roof, shingles, vinyl siding and gutters. Large branches of trees will snap and shallowly rooted trees may be toppled. Extensive damage to power lines and poles likely will result in power outages that could last a few to several days.

### **CATEGORY 2** 96-110 mph

Extremely dangerous winds will cause extensive damage: Well-constructed frame homes could sustain major roof and siding damage. Many shallowly rooted trees will be snapped or uprooted and block numerous roads. Near-total power loss is expected with outages that could last from several days to weeks.

### **CATEGORY 3** 111-129 mph (major)

Devastating damage will occur: Well-built framed homes may incur major damage or removal of roof decking and gable ends. Many trees will be snapped or uprooted, blocking numerous roads. Electricity and water will be unavailable for several days to weeks after the storm passes.

### **CATEGORY 4** 130-156 mph (major)

Catastrophic damage will occur: Well-built framed homes can sustain severe damage with loss of most of the roof structure and/or some exterior walls. Most trees will be snapped or uprooted and power poles downed. Fallen trees and power poles will isolate residential areas. Power outages will last weeks to possibly months. Most of the area will be uninhabitable for weeks or months.

### **CATEGORY 5** 157 mph or higher (major)

Catastrophic damage will occur: A high percentage of framed homes will be destroyed, with total roof failure and wall collapse. Fallen trees and power poles will isolate residential areas. Power outages will last for weeks to possibly months. Most of the area will be uninhabitable for weeks or months.

BEMC is a not-for-profit, member-owned electric utility serving more than 86,000 locations across Brunswick, Columbus, and parts of Robeson and Bladen counties in southeastern North Carolina.